

State of Wyoming Corner Record

(In compliance with the CORNER PERPETUATION AND FILING ACT, Wyoming Statutes, 1977, Section 36-11-101, et. seq., and the Rules and Regulations of the Board of Registration for Professional Engineers and Professional Land Surveyors)

Reverse side of this form may be used if more space is needed.

Record of original survey and citation of source of historical information (if corner is lost or obliterated). Description of corner monumentation evidence found and/or monument and accessories established to perpetuate the location of this corner. Sketch of relative location of monument, accessories, and reference points with course and distance to adjacent corner(s) (if determined in this survey). Method and rationale for reestablishment of lost or obliterated corner.

G.L.O. Notes: U.S. Deputy Surveyor, Edwin James, June 20, 1871; 80.00 Chains... Set a sand stone 18 x 10 x 4 for corner to Sections 34, 35, 26 & 27;

Found: A well set "CR" stone per Laramie County Road Survey Circa 1929, East of the corner point. Also found a marked reddish colored sand stone in the West R/W fence of Laramie County Road No. 140. Stone appears to be the original section corner stone and not called for in the County Road survey notes. Stone was marked with a faint 2 notches on the east face and 1 notch on the south face.

Set: I determined the corner point to be 40.00 feet west of the found well set "CR" stone and on line with the found original stone in the West R/W fence. At the corner point I set a No. 5 x 24" rebar with a marked 2" Aluminum Cap approximately 0.5' below Laramie County Road No. 140 graded gravel surface. Set a 60d nail in the south face of a R.R. Tie fence corner post 40.69' West of corner. Set a 60d nail in the northwest face of a R.R. Tie fence post north of a existing gate @ 47.89' NE of corner.

See back of this sheet for ties to adjacent monuments.

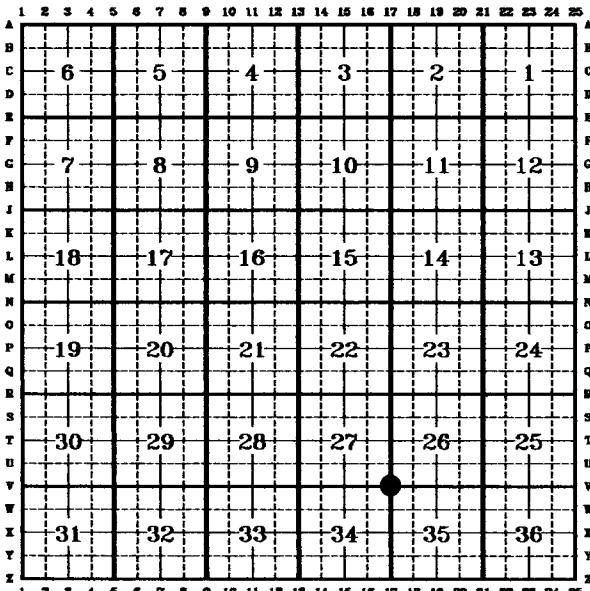
Aluminum Cap Markings

T.15N.	R.64W.
S.27	S.26
S.34	S.35
1994	
PLS 2927	

200707
LARAMIE COUNTY CLERK
CHEYENNE, WY.
97 APR 7 PM 4 40

Date of Field Work: 29, March, 1994 Office Reference: EXXON Looseleaf Pg. 70

CROSS INDEX DIAGRAM

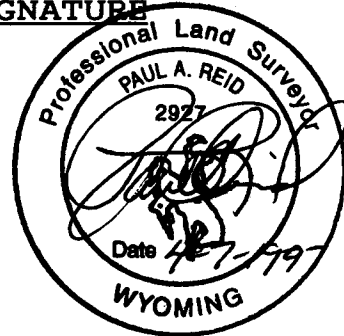


Firm/Agency, Address

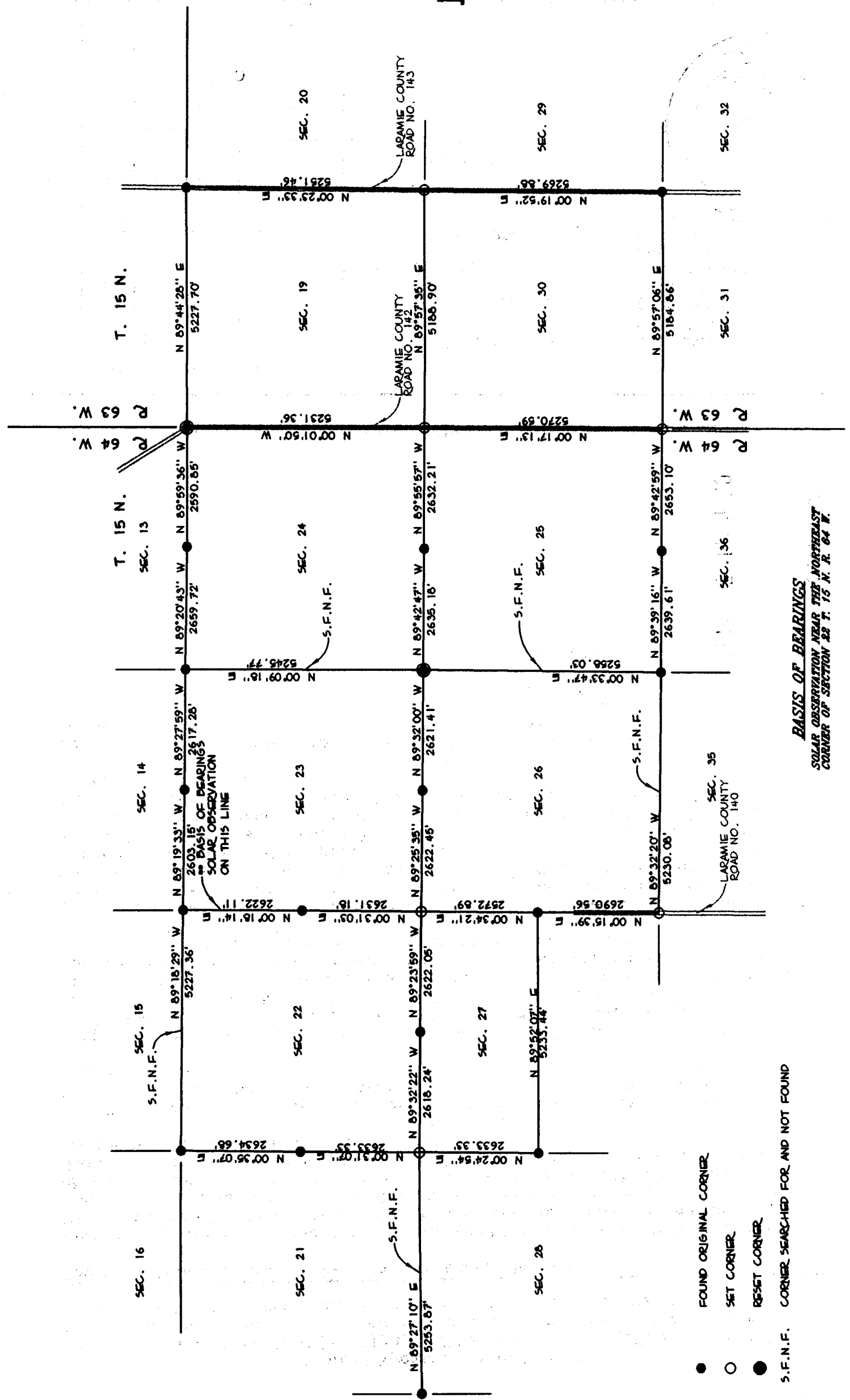
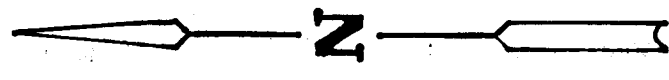
Paul A. Reid, A.V.I.p.c.
2035 Westland Road
Cheyenne, WY 82001

Telephone Number:
(307)-634-6017

This corner record was prepared by me or under my direction and supervision.
SEAL & SIGNATURE



Corner Name: SW Corner Section: 26 T 15N R 64W; 6TH P.M. Cross-Index No.: V-17



BASIS OF BEARINGS
 SOLAR OBSERVATION NEAR THE NORTHEAST
 CORNER OF SECTION 23 T. 15 N. R. 64 W.

- FOUND ORIGINAL CORNER
- SET CORNER
- RESET CORNER
- S.F.N.F. CORNER SEARCHED FOR AND NOT FOUND